

Southeastern Yearly Meeting of the Religious Society of Friends

Winter Interim Business Meeting

January 19, 2019
Orlando Friends Meetinghouse

Minutes

The meeting was held at the Orlando Monthly Meeting meetinghouse. IBM/EC Clerk Nancy Corindia opened the meeting at 1pm with a period of silent worship.

Reading: YM Clerk Bill Carlie read the following:

We all need Friends willing to meet us where we are, wait with us, walk with us, hold us, challenge us, encourage us, help us to recognize when it's not time yet and bring us back to what's most real when we stumble or wander from the Way. There is an Iraqi saying about community that 'It's not the finger that matters most, but the hand and the arm behind it.' It takes a meeting to raise a ministry. —Noah Baker Merrill

Roll call and Milestones: The YM clerk called the roll of meetings. Those present identified themselves and announced meeting milestones. Fort Myers MM—Bill Wells and Larry Scott Butler have passed, Paul Davis is a new member by convincement, and Susan Oehl, Charles Lipsen, and Norma Lipsen have transferred from outside SEYM. Clearwater MM—Ed Finklestein and Sue Day have passed, Luella Chatters has become a new member, and Katie W. Green is transferring from Worcester MM (NEYM). Tampa MM—Barbara Wolfe is now in hospice. St. Augustine WG – This new group, under the care of Orlando MM, had its first meeting for worship on January 29th (see Worship & Ministry Report).

Executive Committee Report: Friends accepted the Recording Clerk's report. There were no EC decisions requiring numbered minutes. EC meeting as Personnel Committee noted that staff evaluations are in process and approved appropriate pay increases.

Worship & Ministry Committee Report: Friends accepted co-clerk Clara Diaz's report (Attachment 1). During 2019 Gathering, the committee will propose a speaker for the 2020 Michener Lecture, give a Saturday workshop by Lisa Erasmus and Jan Dahm entitled "The Language of Love: Speaking and Listening in the Spirit," and host daily worship sharing. Note: Three more Worship Sharing leaders are needed (contact Clara Diaz or Nancy Triscritti).

The committee invites Friends to contact and/or engage with several new SEYM worship groups:

- Bluffton, SC (in exploratory stage)—Lynn and Steven Newsom lynewsom@gmail.com
- The Villages, north of Leesburg (in exploratory stage)—inquiries to office@seym.org
- St. Augustine, under care of Orlando MM—Richelle Ogle rogle415@gmail.com
- Gulf Coast Worship Group, under care of Sarasota MM—Nancy Rose Logan cornfrog@gmail.com

March 31st is the next 5th First Day opportunity for Intervisitation.

Several in our midst need to be held in love and light: Barbara Wolfe, Fern Mayo, Harold Branam and his family, and Mimi McAdoo. Another concern is that some monthly meetings and worship groups are slowly dwindling in attendance and support. The committee will address this concern during Gathering.

Ministry on Racism Committee Report: Friends accepted co-clerk Susan Taylor's report (Attachment 2). Friends are encouraged to determine which indigenous tribal lands they meet on and to share this information publicly. Two interactive online maps for this purpose are "Native Lands" native-land.ca and the University System of Georgia's "Invasion of America" usg.maps.arcgis.com/apps/webappviewer/index.html?id=eb6ca76e008543a89349ff2517db47e6. The committee notes that indigenous peoples, people of color, and other marginalized people are the first ones to feel the effect of a government shut-down, due to lack of pay, food, medicine, and other needs.

There will be a Prayer Walk, Jan.26-Feb. 1, around Lake Okeechobee, organized by Betty Osceola, for healing of the Lake. Beverly Ward recommended that Friends Mark Charles' 1.5-hour YouTube lecture on the 1493 "Doctrine of Discovery" of Pope Alexander VI youtu.be/XRRDuInkgrl.

Friends are invited to read the January 2019 Friends Journal, themed "A Racially Diverse Society of Friends" (this is a full-access issue www.friendsjournal.org/january-2019-full). It includes "An Interview with the Co-clerks of Institutional Assessment on Racism Task Force" of Friends General Conference www.friendsjournal.org/fgc-racism-task-force. The committee is developing a workshop entitled "Where Are You Really From?" based on Derald Wing Sue's book, *Microaggressions in Everyday Life: Race, Gender, and Sexual Orientation*.

Peace & Social Concerns Committee: Friends accepted the report of Karen Putney and Cece Yocum (Attachment 3). In reviewing its recent survey of SEYM, the committee raised concerns about the functioning of local P&SC committees, the weakening of this network structure, and the need for vehicles for corporate work and witness. They focused on our ability to communicate with one another across the body of SEYM. The written report includes a list of recommendations.

Friends discussed Tampa MM's letter of endorsement for the boycott of Wendy's by Coalition of Immokalee Workers ciw-online.org/wendys, advocating for Wendy's to join the Fair Food Program www.fairfoodprogram.org. The committee will send this letter out for consideration and comment. The boycott also highlights the need for a humanitarian code of conduct for employers of farm workers, including the reporting and stopping of physical and sexual abuse and the provision of healthcare.

CIW is not presently boycotting Publix, because Publix stores are often the only local groceries for many farmworkers. Instead, Friends are encouraged to write Publix corporate management in support of the Fair Food Program. Friends are also asked to watch and share the TED Talk by Gerardo Reyes-Chavez, "Making Corporations Pay," youtu.be/N6fly-p3hu0.

Earthcare Committee Report: Friends accepted Bill Carlie's report. The committee is considering post-election policy changes at the state and national level, but it has not yet discerned specific concerns to raise up. A review of the Field Secretary for Earthcare Program is in process, in anticipation of Gathering sessions and the new fiscal year's budget proposals. The FSE and the

committee have committed to presenting two Gathering workshops.

The committee requested approval to distribute the newly drafted “**A Testimony to Earthcare**” (Attachment 4) to SEYM bodies for review and comment, with the goal of presenting a final draft at Yearly Meeting. Friends approved the following minute. It is recommended that MMs/WGs read the testimony aloud at the rise of meeting or during meeting for business, so that Friends can appreciate its full scope.

19WIBM01. Winter Interim Business Meeting of Southeastern Yearly Meeting approves distribution of “A Testimony to Earthcare,” as included in the 2019 WIBM Documents in Advance, to the monthly meetings and worship groups for consideration and comments in response.

Field Secretary for Earthcare Report: Friends accepted Beverly Ward’s report (see DIAs pp. 10-12 and Attachment 5). Beverly reviewed visits to MMs and those still “owed” this fiscal year; introduced Riley Robinson from FCNL; mentioned her proposed 2019 Gathering workshop on climate gentrification; spoke of work with the new Underwater Homeowners Association movement in South Florida (see cortada.com/2018/underwaterHOA/main); and reported that she will be the keynote speaker during the first plenary session of Friends General Conference Gathering this summer (“How I Get Over: My Journey towards Peace and Justice in Care for the Earth,” www.fgcquaker.org/events/beverly-ward). Friends approved the following minute:

19WIBM02. Winter Interim Business Meeting of Southeastern Yearly Meeting sends our love, light, and support with Beverly Ward, our Field Secretary for Earthcare, as she speaks to the Monday plenary session of Friends General Conference Gathering on July 1, 2019, at Grinnell College, Grinnell, IA.

Youth & Young Adult Coordinator: Friends accepted Kody Hersh’s report. The first phase of Kody’s project involves establishing a work rhythm, establishing priorities, and getting the word out (see “Y&YAC Work Plan,” Attachment 6). Some resources to come: strengthening existing youth programs; presence at other SEYM events; developing an appointment system to allow calls and video chats with Kody for exchanging ideas, troubleshooting, etc.; visits to meetings, workshops, etc. A Friend noted that local meetings continue to have their own responsibilities for youth programs and CAPP.

Nominating Committee Report: Friends accepted Ellie Caldwell’s report. Nominees:

- IBM/EC Clerk – Nancy Corindia through 2022
- YM & IBM Assistant Clerk – Nancy Howell through 2022
- Gathering Bookstore – Carolyn Kauffman through 2021.

Vacancies: Recording Clerk, IBM - vacant; Trustees – 2 vacancies; Child Abuse Prevention Program (CAPP) Coordinator - vacant; Faith & Practice Clerk – Sabbatical until 2019; Finance Committee – 1 vacancy; YM Gathering Committee – 1 vacancy; AFSC Corporation – status unclear; FGC Central Committee – 1 vacancy; Florida Impact, Contact person – vacant.

Friends approved the following minute:

19WIBM03. Winter Interim Business Meeting of Southeastern Yearly Meeting approves the nominations as listed.

Naming Committee Report: Friends accepted Peter Schmidt's report. Shawna Doran is approved for the Nominating Committee. That committee still has one vacancy.

Half Yearly Meeting Report: Friends accepted Kathy Hersh's report. The 2018 event had only 40 attendees, so revenue was inadequate. The speaker was a University of Florida expert on Florida's springs. Brian Olson agreed to be the new registrar. The event needs a new meal coordinator.

Gathering Committee Report: Friends accepted Deborah Breedon's report. Those requesting workshop time slots need to submit the forms regarding audio/visual and other needs. There will be a set time for meal announcements so that Friends know when to expect them.

Secretary's Job Search Report: Friends accepted Bill Carlie's report. Despite the June deadline, the search has produced only one inquiry so far. Please share the SEYM Secretary Job Opening webpage seymquakers.org/blog/2018/08/31/seym-secretary-job-opening with likely candidates in your meetings and communities.

Treasurer's Report: Friends accepted Joel Cook's report (Attachment 7).

Finance Committee Report: Friends accepted Peter Schmidt's report. The committee has built a preliminary draft Fiscal Year 2019-20 budget. The budget will be presented in the DIAs for 2019 Gathering. MMs/WGs should make certain they review the DIAs, which usually are sent in time for two monthly meetings for business before Gathering. Joel Cook added that the committee is considering increasing Gathering registration from \$35 to \$50 per person.

FCNL Representative Report: Friends accepted Karen Putney's report. FCNL's Quaker presence Washington is of great value. The Quaker Welcome Center is a "safe place" for members of Congress and their staff people to meet and explore concerns across party lines. FCNL's 52 staff people represent 25 yearly meetings and a range of Quaker organizations, modeling the Quaker process of integrity, work, and witness on Capitol Hill (see George Takei's YouTube video youtu.be/MyJpHgm9gl8). With regard to environmental issues and climate change, Florida is the "canary in the coal mine." FCNL is making use of SEYM's participation, because all of its lobbying and educational work is done by story, and the stories are here.

AFSC Representative Report: Friends accepted Richelle Ogle's report. AFSC continues to be deal with immigrants and refugees and with the U.S. response to Central American refugee "caravans." As one example, AFSC Miami Office is assisting Miami MM in its support of a refugee mother and son. For more information, see "Sanctuary Everywhere" www.afsc.org/sanctuaryeverywhere, "Love Knows No Borders" migrantjustice.afsc.org, and Lucy Duncan's February Friends Journal article, "Why I Got Arrested at the Border" www.friendsjournal.org/afsc-love-knows-no-borders.

QUNO Representative Report: Friends accepted Warren Hoskins' report. New United Nations Secretary-General António Guterres has initiated a major project to reform the UN's structure and function (see reform.un.org). With regard to immigration and refugee concerns, see QUNO's "Briefing for Friends – December 2018: Towards an ambitious, effective and human rights-based global migration policy" by Cassidy McKenna (tinyurl.com/quno-briefing).

QEW Representative Report: Friends accepted Jack Bradin’s report. QEW has increased its budget by 25%, in order to give staff pay and benefits comparable with similar staff elsewhere. QEW has a statement on the “Doctrine of Discovery” mentioned by the Ministry on Racism Committee (www.quakerearthcare.org/article/qew-statement-doctrine-discovery).

FWCC Representative Report: Friends accepted Eduardo Diaz’s report. Joel Cook will give an address at the 2019 Section of the Americas Meeting in March fwccamericas.org/_wp/event/2019-section-meeting. See the FWCC study book for more information tinyurl.com/fsc-study-book.

Friends Peace Teams: Friends accepted Cece Yocum’s report. Peacebuilding en las Américas (PLA) friendspeaceteams.org/pla is providing Alternatives to Violence Project (AVP) training across Guatemala, El Salvador, Honduras and Colombia. PLA is taking AVP into the prisons among the most dangerous of gangsters, with the aim of preventing violence so that people need not become refugees. They are also working with indigenous people.

Havana Unprogrammed Worship Group Report: Friends accepted Mercedes Sosa’s report. She described her recent visit to many of the worship group participants.

Friends approved the following minute of appreciation for Orlando MM:

19WIBM04. Winter Interim Business Meeting of Southeastern Yearly Meeting thanks Orlando Monthly Meeting for yet another gracious round of hospitality for WIBM and the 2019 Michener Lecture.

Meeting concluded with silent worship.

Submitted by Mike Shell,
IBM/EC Recording Clerk

Numbered Minutes

19WIBM01. Winter Interim Business Meeting of Southeastern Yearly Meeting approves distribution of “A Testimony to Earthcare,” as included in the 2019 WIBM Documents in Advance, to the monthly meetings and worship groups for consideration and comments in response.

19WIBM02. Winter Interim Business Meeting of Southeastern Yearly Meeting sends our love, light, and support with Beverly Ward, our Field Secretary for Earthcare, as she speaks to the Monday plenary session of Friends General Conference Gathering on July 1, 2019, at Grinnell College, Grinnell, IA.

19WIBM03. Winter Interim Business Meeting of Southeastern Yearly Meeting approves the nominations as listed.

19WIBM04. Winter Interim Business Meeting of Southeastern Yearly Meeting thanks Orlando Monthly Meeting for yet another gracious round of hospitality for WIBM and the 2019 Michener Lecture.

Attendees

Clearwater MM	Phil Stone	Palm Beach MM	Ellie Caldwell Jack Bradin
Ft. Myers MM	Nancy Fennell Richard Frechette Tom Fennell	Palm Beach MM/Treasure Coast WG	Joel Cook
Gainesville MM	Bonnie Zimmer	Sarasota MM	Nancy Corindia Tom Corindia
Jacksonville MM	Mike Shell	St. Augustine WG	Richelle Ogle
Miami MM	Andrea Hoskins Warren Hoskins Clara Diaz Eduardo Diaz Kathy Hersh Mercedes Soca	St. Petersburg MM	Dianne Langan
Miami MM/Orlando MM	Kody Hersh	Tallahassee MM	Angie Prather Jim Meade Susan Taylor Vicki Mariner
Orlando MM	Ed Lesnick Kay Lesnick Minerva Glidden Vicki Carlie William Carlie	Tampa MM	Beverly Ward Cecilia Yocum Deborah Breeden Karen Putney Nancy Triscritti Peter Schmidt
		Tampa MM/Lake Wales WG	Caroline Lanker

Attachment 1

Worship & Ministry Committee Report for WIBM, January 19, 2019

Nine of us joined for what proved to be a lively and productive gathering. Following the sharing of memories that make us smile, we addressed tomorrow's Michener Lecture with Eden Grace. With our known bases covered, we moved on to a lengthy and rich discussion concerning opportunities for the 2020 Michener Lecture. Following considerable discernment, a name arose which a member of our committee will contact. More to come at SEYM's Annual Gathering.

This brought up our next agenda item, the Annual Gathering. We gladly promote Worship and Ministry's Workshop, "The Language of Love: Speaking and Listening in the Spirit," led by Lisa Erasmus and Jan Dahm. This is scheduled for Saturday. Another of our responsibilities is to provide leaders for our daily Worship Sharing groups. We need three more volunteers. If available and interested, please see Clara Diaz or Nancy Triscritti.

Intervisitation is still much encouraged, with this March being the next 5th First Day opportunity.

Considerable discussion focused on new, nascent Worship Groups: Bluffton, SC; The Village, north of Leesburg; St. Augustine; and Venice, FL. We explored ways we could be supportive and helpful. At our next meeting, we will generate a list of ideas and resources which these groups may find useful. If you are so led to contact and/or engage these new groups, the following names and emails are available:

- Lynn and Steven Newsom, Bluffton, SC (in exploratory stage) lynewsom@gmail.com
- The Villages, north of Leesburg (in exploratory stage) inquiries to office@seym.org
- Richelle Ogle, St. Augustine, under care of Orlando MM rogle415@gmail.com
- Nancy Rose Logan, Gulf Coast Worship Group, under care of Sarasota MM cornfrog@gmail.com

Several in our midst need to be held in love and light: Barbara Wolfe, Fern Mayo, Harold Branam and his family, and Mimi McAdoo.

Another concern voice regards monthly meetings and worship groups which are slowly dwindling in attendance and support. Tied to this is the topic of Vocal Ministry. We seem to know well its feast or famine cycle! This committee will devote considerable time at Annual Gathering to this serious concern.

We closed with a moment of silence.

Respectfully submitted,
Clara Diaz
Co-clerk of Worship and Ministry

Attachment 2

Committee for Ministry on Racism Report – WIBM, January 19, 2019

Our committee opened with worship.

Each time we meet, we will remember the Indigenous Peoples who were here before us. Orlando Monthly Meeting now sits on the tribal lands of the Timucuan American Indians. We ask that monthly meetings and worship groups identify the tribal lands of American Indians that their meetings stand on. Some detailed interactive online maps for discovering these tribal lands include “Native Lands” native-land.ca, developed by Victor G. Temprano, and the University System of Georgia’s [Invasion of America](#).

We held in our hearts the suffering of American Indians and many others caused through lack of pay, food, medicine, and other needs because of the current government shut-down. People of color and marginalized people are the first ones to feel the effect of a government shut-down. Our committee seeks to act on injustices and asks Friends to call Senator Mitch McConnell, majority leader of the U.S. Senate with the message: “Please re-open the government so our country can function and people who are hungry can be fed.” D.C. office: 202-224-2541. Alternate phone numbers were also posted on the chalk board in the dining area, since the voice mail on the D.C. number was full.

We recommended to Friends the January 2019 Friends Journal, themed “A Racially Diverse Society of Friends” (this is a full-access issue www.friendsjournal.org/january-2019-full). Included is “An Interview with the Co-clerks of Institutional Assessment on Racism Task Force” of Friends General Conference’s Central Committee (FGC’s governing body) www.friendsjournal.org/fgc-racism-task-force. This article will help to answer questions Friends might have about the assessment. We will report later on ways the assessment could be a help to SEYM in addressing implicit racism among Friends.

There will be a Prayer Walk, Jan.26-Feb. 1, around Lake Okeechobee, which has been organized by Betty Osceola for healing of the Lake. She is a member of the Miccosukee tribe and Panther clan. The walk is over 100 miles and Friends and others are invited to join for any distance and to hold the Walk in prayer. This is not a protest.

Beverly Ward recommended that Friends watch Indigenous man Mark Charles’ 1.5-hour YouTube lecture on the Doctrine of Discovery: <https://youtu.be/XRRDuInkgrI>. Having a better understanding of the 1493 “Doctrine of Discovery” of Pope Alexander VI (see www.gilderlehrman.org/content/doctrine-discovery-1493) is important in grasping the roots of colonialism and structural racism in the United States.

Beverly Ward also gave us the Water Circle report to Quaker Earthcare Witness from UN Working Group at QEW.

Much of our meeting was concerned with the successful development of our SEYM Workshop on microaggressions, entitled “Where Are You Really From?” The core reference for the workshop will be Derald Wing Sue’s book: *Microaggressions in Everyday Life: Race, Gender, and Sexual Orientation* and Anti-Defamation League resources. It is important to bring to awareness that microaggressions are nonverbal as well as verbal (e.g. eye rolling or clutching purse when one sees a man of color). The

workshop will Invite Quakers to step out of their comfort zone and deal with own personal biases. From there, we can begin to share with others.

Susan Taylor reported on the Tallahassee community's Community Remembrance Project, in partnership with the Equal Justice Initiative (eji.org). Tallahassee Meeting is a partner with other faith and non-faith groups in this effort to memorialize documented people who were lynched, and to provide ongoing education "for truth and reconciliation that urges [people] to search for just solutions to contemporary problems." Susan made available Equal Justice Initiative literature for Friends to peruse. It was reported that Alachua County is looking into this. Are other counties within SEYM?

Jane Westberg was unable to attend our meeting but had e-mailed the committee about an important Indian Boarding School webinar series: "*The National Native American Boarding School Healing Coalition (NABS) is pleased to announce the launch of our 2019 Webinar Series. The 10-episode series will educate audiences about the history and impacts of U.S. Indian boarding schools and feature positive examples of how tribal nations are healing from the ongoing legacies of the Boarding School Era.*" The Series boardingschoolhealing.org/2019-webinar-series will be split into two parts, a Spring section that will run from February to June, and a Fall section that will go from August to December.

In the Light,
Susan Taylor, Co-clerk for the committee

Attachment 3

SEYM Peace & Social Concerns Committee January 19, 2019

Attending – Cece Yocum (Tampa) clerking, Warren Hoskins (Miami), Phil Stone (Clearwater), John Heimburg (Orlando), Mercedes Soca (Miami)

WORSHIP

REVIEW of FIBM Minutes

SURVEY – Discussion of results of survey sent out to MMs after WIBM. 12 meetings responded with primary P&SC concerns listed as Climate Change, Immigration, Racism & Inequality – more specifically AVP and Mass Incarceration.

Reported on the functioning of our specific P&SC committees and discussed concern about weakening of that structure and vehicle for corporate work and witness. Considered concerns around our ability to communicate with one another across the body of SEYM and our need to improve communications.

Recommendations:

- P&SC will send out results of survey to MMs with a cover letter and also a special note to those who responded to the survey.
- Need glossary of acronyms referring to organizations working on issues of concern that were brought forward in survey.
- Need to facilitate better communication to Friends in SEYM and among Friends in SEYM. Possibly exploring a variety of communication tools and offering tutorials in usage.
- Yearly Meeting workshops or interest groups to be facilitated on specific issues of concern to offer time for Friends to hear what each other are doing. Actions being taken via coalitions, organizations, monthly meeting and as an individual.
- Also workshop on how we strengthen our work and witness through care and nurture by meeting of meeting and individuals. Possibly develop a worship sharing format to be shared for use within MMs to this purpose.

COALITION OF IMMOKALEE WORKERS – Tampa Meeting shared endorsement letter for Wendy's Boycott by CIW. Asking for Friends present at WIBM to take this letter for consideration of endorsement by their MM. If sign-on letter can then be sent to CIW as official endorsement of Boycott.

AVP in Nicaragua – Presented and referred as a Friends Peace Teams report issue.

IMMIGRATION – Friend raised the valuable resource FCNL staff on Immigration can be and wish this be made known to MMs.

CALL TO ACTION – Proposal to season the idea of starting an SEYM Call to Action that would have SEYM Friends collectively engaging in a vigil on a specific issue with one-time vigils being held across the state on the same date and time.

Attachment 4

A Testimony to Earthcare (draft)

Friends experience a deep spiritual connection to the natural world. Our connection arises from and integrates with our Testimonies to Simplicity, Integrity, Community, and Equality and centers on living in Peace as part of the environment.

Friends arrive at this sense of deep connection, as with all things, by many paths. Some Friends find this to arise from a sense of responsibility and stewardship, “that we must take care of the gift on loan to us”. Other Friends express this connection as an understanding that “nature itself is an expression of the Divine”. Some find joy and reverence in the simple experience of the natural world. Others among us study nature and find inspiration in the complexity of interrelatedness, in how each element of nature depends on another. Many of us share in all or most of these paths and we unite in seeking a greater sense of communion with the natural world.

Friends deeply lament the damage already done to the natural world and the continuing process of environmental degradation that is often the result of our search for material gain and individual satiation regardless of cost. Our Testimony to Simplicity expresses itself in this regard in a manner that often unites with the words of George Fox who cautions us to “not waste the creation upon our lusts”. We understand and acknowledge that living in a natural, clean, and safe environment has a far greater value than all the material things that arise from destroying it can ever provide.

Our Testimony to Integrity compels us to live lives that are honest, fair, and just. We find that practices that export the impacts of our excessive consumption to our neighbors in other communities, states, and nations lack this integrity.

Historically, our Testimony to Equality has caused us to object to exploitation with the strength and resilience of Truth. We find the conditions that allow for the exploitation of natural resources and of our human communities to be cut from the same spiritual fabric. We are called to break our silence and refuse to consent when environmental injustice is visited upon those whose voices are consistently ignored. We are led, as Friends have been at other daunting moments in history, to overcome our own despair, to relieve suffering, and to unite with Spirit in ways never before imagined to bring new possibilities to Life.

Daily, we become more aware of the suffering of the planet and its people. We find an increasing demand to do justice, to “let our lives speak” individually and corporately. Living in Blessed Community with each other and the natural world takes more than words, it requires action. We encourage Friends to worship together with deep attention to how they may act to bring forward a sense of peace in our experience of community with each other and in communion with nature.

Field Secretary for Earthcare – WIBM Report Addendum

(Please see the attached mindmap for a visual description of the organizations and linkages of the activities/work effort.)

As described in the FSE job description, a number of Monthly Meeting/Worship Group visits have taken place or are planned since submitting the report for documents in advance. These include:

- Missed Orlando to be rescheduled
- Gainesville, Advanced AVP Workshop, 20181116-18; Theme: Justice
- Tampa, Monthly Meeting Retreat, 20190126
- Jacksonville, to be scheduled
- Lake Wales, to be scheduled
- Broward County, Leadership by Faith-based Organizations in Environmental Stewardship and Community Resilience, www.facebook.com/events/2144565708944749
- Florida Interfaith Climate Actions Network (FL-iCAN), fl-ican.org
- Co-sponsored by the Florida Council of Churches, the Unitarian Universalists, and SEYM
- FCNL visit 20190115. Met with Riley Robinson and, briefly, with Diane Randall
- SEYM Gathering workshop, “Climate Gentrification: Where Will Quakers Go?”
- Underwater Homeowners Association, cortada.com/2018/underwaterHOA/main. Repurpose political signs to educate self and neighbors about sea level rise and flooding
- Quaker Earthcare Witness (QEW), co-clerk the United Nations Working Group (UNWG) with Jack Bradin, Palm Beach Meeting. The UNWG will convene three side events during the UN High Level Political Forum, 8-19 Seventh Month (July) 2019, one of which will be the Water Circle. I will facilitate this circle and will contribute case examples from Florida.

FGC 2019 Gathering:

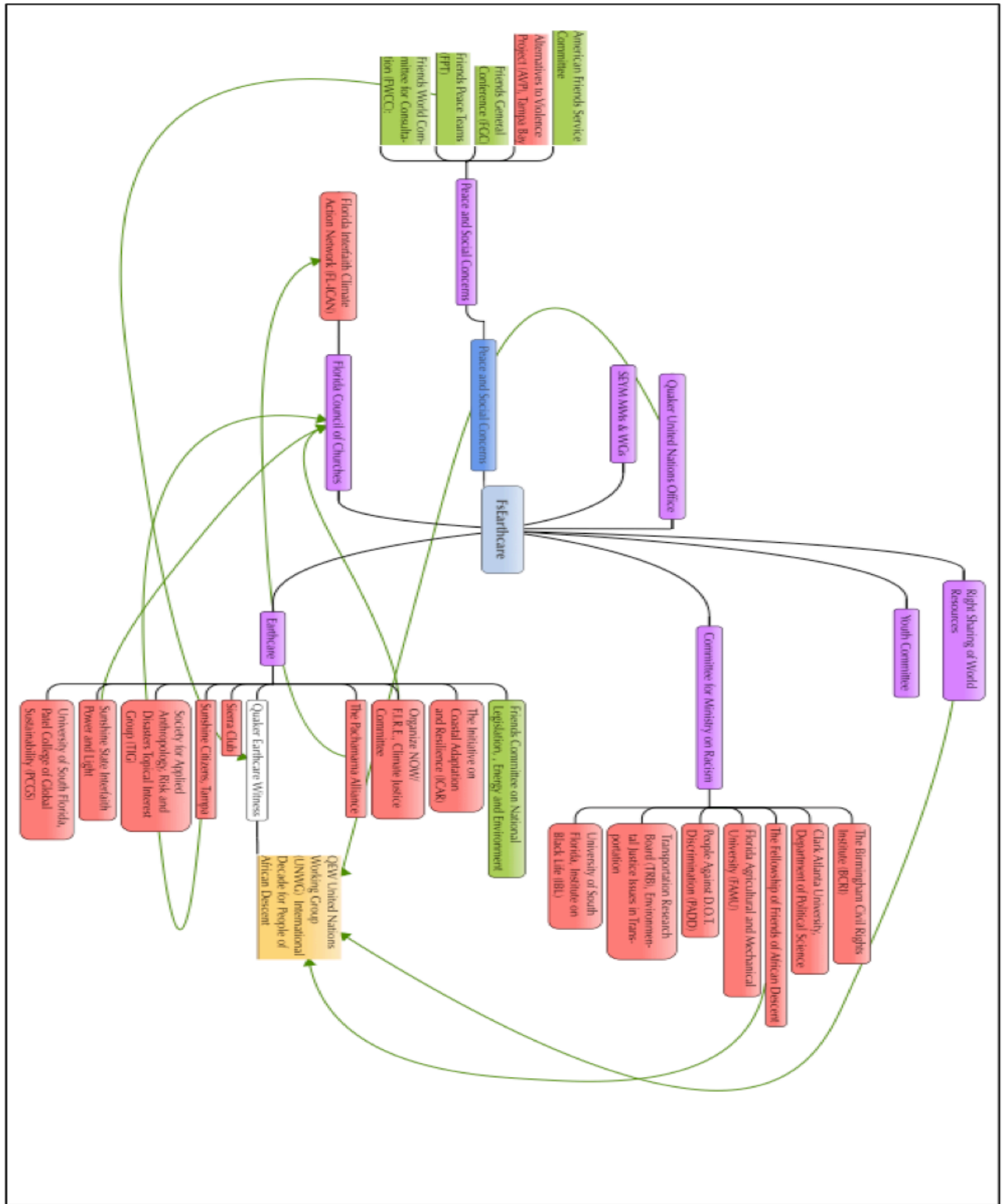
QEW and the Fellowship of Quakers in the Arts (FQA) are continuing to collaborate. The theatrical troupe, Bohn Jeverly, will perform in both centers during the Gathering. Please hold me in the Light as I stand for SEYM during the Second-day evening program. I will share “How I Get Over: My Journey towards Peace and Justice in Care for the Earth.”

I have had two interviews; one with Victoria Machado, a doctoral student at the University of Florida, investigating the human-nature connection by interviewing environmental activists who work in Florida, particular those connected with water issues. The second with Hannah Brown on climate change work and women of faith, tinyurl.com/y967deks.

I’m also working with two advanced degree-seeking students at USF interested in climate justice; one, urban planning, and the other on civil engineering.

Love and Peace
Beverly

Figure 1. SEYM FSE Activities/Connectivity



Attachment 6

Youth & Young Adult Coordinator Work Plan Months 1&2 (Jan and Feb)

Major focus: Set-up tasks; familiarizing myself with existing RE and outreach resources: effectively publicizing the resources and opportunities presented by this new position to MMs and individuals in SEYM; SEYM Gathering planning; WIBM

Set-up tasks

- Get email up and running
- Establish organizational systems, make work plans
- Help set-up support committee
- Connect w/co-workers and collaborators (AdminSec; YouthComm clerk and other members; CAPP coordinator; YM treasurer; EarthcareSec)
- Reach out to counterparts in other Yearly Meetings
- Develop lists of known youth and YAs in SEYM
- Set-up a user-friendly communication and appointment system

Familiarizing myself with existing RE and outreach resources

- Research curricula recently published by Quaker presses
- Research curricula published by other progressive faith communities and historic peace churches
- Review Outreach and RE resources on FGC website
- Develop an annotated list of helpful resources that can be shared with others
- Connect with the Quaker RE Collaborative

Publicizing this position to SEYM MMs and individuals

- Work with AdminSec on a news piece, website updates, future newsletter collaborations
- Begin to establish a network of MM contacts who can reliably pass on announcements and resources to their meetings
- Reach out to individual youth and young adults to let them know that the position has started and invite them to give feedback or utilize resources

SEYM Gathering planning

- Work with Youth Committee on program planning, publicity, volunteer recruitment, and logistics for youth programming
- Plan an event for young adults attending the YM Gathering
- Reach out to young adults and families to encourage YM Gathering registration
- Submit a report for YM Gathering DIA by the deadline (Feb 24)

Winter Interim Business Meeting

- Attend WIBM with particular attention to connecting with any youth, families, or young adults in attendance
- Report on job launch o Meet with Youth Committee
- Look for opportunities to engage Friends in conversation about the new position, especially the opportunity to invite YYA coordinator to meetings to lead workshops, retreats, and trainings
- Support CAPP training

Attachment 7

Treasurer Report for 2019 Winter Interim Business Meeting

Southeastern Yearly Meeting of The Religious Society of Friends

Treasurer Report for 2019 Winter Interim Business Meeting

Report for end of First Half of Fiscal Year 2018-19 (June 1, 2018 thru November 30, 2018)

All values are rounded to the nearest dollar.

SEYM Total Cash Flow not including Trustees

The overall cash flow of the Yearly Meeting (excluding the accounts under the care of the Trustees) for this period yielded a net income of \$4,310. Excluding unrealized capital gains of \$66 on investments for the Publications program and including \$7,475 restricted donations for the Field Secretary for Earthcare program. This resulted from an SEYM total real income of \$48,147 against total expenses of \$43,770.

SEYM General Fund for Administration - Cash Flow and Budget Performance

At the end of this period, the General Fund (the operations fund for which we approved a balanced budget of \$79,535 in our 2018 Yearly Meeting sessions) showed a net income of \$4,574. This resulted from General Fund total income of \$33,034 (42% of budget) against expenses of \$28,460 (36% of budget).

Budget Support Apportionments & Contributions Received

During this period, in response to the annual request for support of the approved General Fund Budget (the Apportionments), contributions received from the Monthly Meetings and Worship Groups totaled \$29,511 or 42% of the year's budgeted request of \$69,715.

Sixteen Monthly Meetings and three Worship Groups were included in the Apportionment request this fiscal year. So far, 2 have contributed their entire requested amount, 3 have contributed one-half or more, 5 have contributed less than half, and 6 have not contributed anything.

The unrestricted individual donations received toward the Budget during this period totaled \$540, 27% of the \$2,000 budgeted amount.

Cash Flow Results for Programs

The annual programs for this fiscal year are in progress; cash flow is incomplete.

The Publications program during this period had a net real income of \$1,001, excluding unrealized capital gains of \$66 on investments for the program.

The SEYM Field Secretary for Earthcare program during this period received \$7,475 in donations and had expenses of \$8,514, yielding a net loss of \$1,039.

Net Worth

The Net Worth of the combined Yearly Meeting and its Trustees at the end of this period was \$570,604, an increase of \$1,954 including \$670 in unrealized capital losses since the beginning of the fiscal year.

Joel D. Cook, Treasurer - SEYM 1/13/2019

Southeastern Yearly Meeting
Budget vs. Actual
June 1, 2018 through November 30, 2018

	Jun - Nov 18	Budget	\$ Over/Under Budget	% of Budget
Income				
2000 · Income				
2001 · Donations				
2002 · Indivd.Donations-Classes	540.00	2,000.00	-1,460.00	27%
2003 · Meeting Donations - Other	29,511.35	69,715.00	-40,203.65	42%
Total 2001 · Donations	30,051.35	71,715.00	-41,663.65	42%
2200 · Investment Earnings				
2203 · Savings Account Interest	11.22	20.00	-8.78	56%
Total 2000 · Income	30,062.57	71,735.00	-41,672.43	42%
2700 · Transfer in FROM other classes				
2712 · Michener Lect. to GF/insurance	0.00	150.00	-150.00	0%
2732 · Gath/Walton to GF/insurance	0.00	900.00	-900.00	0%
2752 · HYM to GF/insurance	0.00	450.00	-450.00	0%
2815 · for BertscheOutreach Travel	890.77	1,800.00	-909.23	49%
2820 · for Staff Salary	2,080.66	4,500.00	-2,419.34	46%
Total 2804 · from Trustee's Funds	2,971.43	6,300.00	-3,328.57	47%
Total Income	33,034.00	79,535.00	-46,501.00	42%
Expense				
2999 · Expenses				
3000 · Operating Costs				
3001 · Bank Service Charges	0.00	30.00	-30.00	0%
3002 · PayPal service fee	0.00	10.00	-10.00	0%
3080 · Duplication	34.79	1,500.00	-1,465.21	2%
Total 3100 · Insurance	1,361.35	1,700.00	-338.65	80%
3107 · Youth Worker CAP Certification	111.30	150.00	-38.70	74%
3146 · Non-Profit Corporation Fee	0.00	60.00	-60.00	0%
3200 · Office Supplies	80.26	800.00	-719.74	10%
3270 · Payroll Expenses	19,858.19	41,000.00	-21,141.81	48%
3272 · Employer Payroll Taxes	1,519.15	2,755.00	-1,235.85	55%
3380 · Postage/Shipping	278.05	500.00	-221.95	56%
3381 · Post Office Box rental	92.00	180.00	-88.00	51%
3400 · Office Equipment	220.42	400.00	-179.58	55%
Total 3500 · Professional Fees	1,250.00	1,400.00	-150.00	89%
Total 3640 · Rent warehouse/office	960.00	1,400.00	-440.00	69%
Total 3700 · Repairs	0.00	200.00	-200.00	0%
3816 · Software	921.32	800.00	121.32	115%
3840 · Telephone & Inet access	743.92	1,700.00	-956.08	44%
3860 · Travel Administrative	0.00	2,000.00	-2,000.00	0%
Total 3900 · Website	420.00	1,500.00	-1,080.00	28%
Total 3000 · Operating Costs	27,850.75	58,085.00	-30,234.25	48%
4000 · Committees Operating Expenses				
4309 · Archives	0.00	550.00	-550.00	0%
4329 · EC and IBM	0.00	100.00	-100.00	0%
4339 · Faith and Practice	0.00	50.00	-50.00	0%
4349 · Finance	0.00	50.00	-50.00	0%
4359 · Nominating	0.00	50.00	-50.00	0%
4369 · Peace and Social Concerns	0.00	450.00	-450.00	0%
4389 · Youth Committee	0.00	50.00	-50.00	0%
4399 · Worship and Ministry	0.00	150.00	-150.00	0%
4429 · Earthcare	0.00	500.00	-500.00	0%
4449 · Publications	0.00	50.00	-50.00	0%
4469 · Racism, Ministry on	0.00	50.00	-50.00	0%

01/01/19
Cash Basis

Southeastern Yearly Meeting
Budget vs. Actual
June 1, 2018 through November 30, 2018

	Jun - Nov 18	Budget	\$ Over/Under	
			Budget	% of Budget
4489 · Young Adult Quakers	0.00	50.00	-50.00	0%
Total 4000 · Committees Operating Expenses	0.00	2,100.00	-2,100.00	0%
5000 · Donations to Organizations				
5007 · AFSC	0.00	200.00	-200.00	0%
5018 · Earlham School of Religion	0.00	100.00	-100.00	0%
5027 · FCNL	0.00	300.00	-300.00	0%
5028 · QEW (FCUN)	0.00	200.00	-200.00	0%
5030 · FLGBTQC	0.00	100.00	-100.00	0%
5037 · FGC	0.00	1,200.00	-1,200.00	0%
5038 · FLCoalition for Peace & Justice	0.00	100.00	-100.00	0%
5047 · Florida Council of Churches	0.00	200.00	-200.00	0%
5048 · Florida Impact	0.00	300.00	-300.00	0%
5057 · Friends Journal	0.00	100.00	-100.00	0%
5061 · Friends Peace Teams	0.00	500.00	-500.00	0%
5067 · FUM	0.00	500.00	-500.00	0%
5068 · FWCC	0.00	1,450.00	-1,450.00	0%
5077 · Pendle Hill	0.00	100.00	-100.00	0%
5085 · Quaker House of Fayetteville NC	0.00	200.00	-200.00	0%
5087 · Quaker Life	0.00	100.00	-100.00	0%
5089 · QUNO	0.00	100.00	-100.00	0%
5097 · Wm Penn House	0.00	100.00	-100.00	0%
Total 5000 · Donations to Organizations	0.00	5,850.00	-5,850.00	0%
8000 · Travel & Financial Aid				
8160 · Annual Representative	609.00	4,000.00	-3,391.00	15%
8360 · Attend SEYM-approved Activities	0.00	1,000.00	-1,000.00	0%
8460 · Travel Support to SEYM Business	0.00	1,000.00	-1,000.00	0%
8000 · Travel & Financial Aid - Other	0.00	0.00	0.00	0%
Total 8000 · Travel & Financial Aid	609.00	6,000.00	-5,391.00	10%
8500 · Contingency	0.00	2,000.00	-2,000.00	0%
Total 2999 · Expenses	28,459.75	74,035.00	-45,575.25	38%
9000 · Transfer OUT TO other classes				
9004 · for Youth Programs	0.00	2,500.00	-2,500.00	0%
9005 · for Gathering Youth	0.00	2,000.00	-2,000.00	0%
9060 · for Triennial Travel	0.00	1,000.00	-1,000.00	0%
Total 9000 · Transfer OUT TO other classes	0.00	5,500.00	-5,500.00	0%
Total Expense	28,459.75	79,535.00	-51,075.25	36%
Net Income	4,574.25	0.00	4,574.25	100%

Southeastern Yearly Meeting
Income Expense by Class
June 1, 2018 through November 30, 2018

Income	Admin/General Fund	Gathering/Walton Lecture	Half Yearly Meeting (HYM)	Michener Lecture	Publications	Secretary-Earthcare	Trustee's Funds	TOTAL
2000 - Income								
2001 - Donations	540.00	400.00	50.00	50.00	0.00	0.00	0.00	1,040.00
2002 - Individ Donations-Classes	29,511.35	0.00	0.00	0.00	0.00	0.00	0.00	29,511.35
2003 - Meeting Donations	30,051.35	400.00	50.00	50.00	0.00	0.00	0.00	30,551.35
Total 2001 - Donations								
2040 - Restricted Donations	0.00	0.00	0.00	0.00	0.00	0.00	0.00	0.00
2060 - Donations - Restricted- FSE	0.00	0.00	0.00	0.00	0.00	7,475.00	0.00	7,475.00
Total 2040 - Restricted Donations								
2200 - Investment Earnings								
2203 - Savings Account Interest	11.22	0.00	0.00	0.00	0.00	0.00	0.00	11.22
2205 - Dividends FFC Gathering Youth	0.00	0.00	0.00	0.00	0.00	0.00	0.00	0.00
2210 - Dividends FFC Michener Fund	0.00	0.00	0.00	0.00	0.00	0.00	2,038.00	2,038.00
2215 - Dividends FFC Bertsche OutTravel	0.00	0.00	0.00	0.00	0.00	0.00	426.99	426.99
2220 - Dividends-FFC Staff Salary Fund	0.00	0.00	0.00	0.00	0.00	0.00	890.77	890.77
2230 - Dividends FFC Walton Fund	0.00	0.00	0.00	0.00	0.00	0.00	2,080.66	2,080.66
2280 - Dividends FFC SEYM Publications	0.00	0.00	0.00	0.00	0.00	0.00	789.25	789.25
2290 - Investment Capital Gains/Losses	0.00	0.00	0.00	0.00	0.00	0.00	0.00	0.00
2206 - Capital Gain(Loss) Gath. Youth	0.00	0.00	0.00	0.00	0.00	0.00	-212.29	-212.29
2211 - Capital Gain(Loss) Michener	0.00	0.00	0.00	0.00	0.00	0.00	-44.48	-44.48
2216 - Capital Gain(Loss) BertscheOTra	0.00	0.00	0.00	0.00	0.00	0.00	-92.79	-92.79
2221 - Capital Gain(Loss) Staff Salary	0.00	0.00	0.00	0.00	0.00	0.00	-217.26	-217.26
2226 - Capital Gain(Loss) Unrestricted	0.00	0.00	0.00	0.00	0.00	0.00	-171.00	-171.00
2231 - Capital Gain(Loss) Walton	0.00	0.00	0.00	0.00	0.00	0.00	41.26	41.26
2281 - Capital Gain(Loss) SEYM Publish	0.00	0.00	0.00	0.00	66.22	0.00	0.00	66.22
Total 2290 - Investment Capital Gains/Losses	0.00	0.00	0.00	0.00	66.22	0.00	66.22	66.22
Total 2200 - Investment Earnings	11.22	0.00	0.00	0.00	66.22	0.00	66.22	66.22
2400 - Program Registrations	0.00	0.00	0.00	0.00	331.09	0.00	5,529.11	5,871.42
2430 - Registration Fee	0.00	0.00	2,802.80	0.00	0.00	0.00	0.00	2,802.80
Total 2400 - Program Registrations	0.00	0.00	2,802.80	0.00	0.00	0.00	0.00	2,802.80
2600 - Sales								
2680 - Publication Sales	0.00	0.00	0.00	0.00	749.74	0.00	0.00	749.74
Total 2600 - Sales	0.00	0.00	0.00	0.00	749.74	0.00	0.00	749.74
Total 2000 - Income	30,062.57	400.00	2,852.80	50.00	1,080.83	7,475.00	5,529.11	47,450.31
2700 - Transfer in FROM other classes								
2804 - from Trustee's Funds								
2805 - for Gathering Youth	0.00	2,038.00	0.00	0.00	0.00	0.00	0.00	2,038.00
2810 - for Michener Lecture	0.00	0.00	0.00	426.99	0.00	0.00	0.00	426.99
2815 - for Bertsche Outreach Travel	890.77	0.00	0.00	0.00	0.00	0.00	0.00	890.77
2820 - for Staff Salary	2,080.66	0.00	0.00	0.00	0.00	0.00	0.00	2,080.66
2830 - for Walton Lecture/Gathering	0.00	789.25	0.00	0.00	0.00	0.00	0.00	789.25
Total 2804 - from Trustee's Funds	2,971.43	2,827.25	0.00	426.99	0.00	0.00	0.00	6,225.67
Total 2700 - Transfer in FROM other classes	2,971.43	2,827.25	0.00	426.99	0.00	0.00	0.00	6,225.67
Total Income	33,034.00	3,227.25	2,852.80	476.99	1,080.83	7,475.00	5,529.11	53,675.98
Expense								
2999 - Expenses								
3000 - Operating Costs								
3002 - PayPal service fee	0.00	0.00	113.98	0.00	0.00	0.00	0.00	113.98
3080 - Duplication	34.79	0.00	50.15	0.00	0.00	0.00	0.00	84.94
3100 - Insurance								
3106 - Liability Insurance	1,361.35	0.00	0.00	0.00	0.00	0.00	0.00	1,361.35
Total 3100 - Insurance	1,361.35	0.00	0.00	0.00	0.00	0.00	0.00	1,361.35
3107 - Youth Worker CAP Certification	111.30	0.00	0.00	0.00	0.00	0.00	0.00	111.30
3200 - Office Supplies	80.26	0.00	0.00	0.00	0.00	0.00	0.00	80.26
3270 - Payroll Expenses	19,858.19	0.00	0.00	0.00	0.00	7,800.00	0.00	27,658.19
3272 - Employer Payroll Taxes	1,519.15	0.00	0.00	0.00	0.00	596.70	0.00	2,115.85

Southeastern Yearly Meeting
Income Expense by Class
June 1, 2018 through November 30, 2018

	Admin/General Fund	Gathering/Walton Lecture	Half Yearly Meeting (HYM)	Michener Lecture	Publications	Secretary - Earhore	Trustee's Funds	TOTAL
3380 - Postage/Shipping	278.05	0.00	25.88	0.00	8.38	0.00	0.00	312.31
3381 - Post Office Box rental	92.00	0.00	0.00	0.00	0.00	0.00	0.00	92.00
3400 - Office Equipment	220.42	0.00	0.00	0.00	0.00	0.00	0.00	220.42
3500 - Professional Fees								
3556 - Web consult/CGI script	1,250.00	0.00	0.00	0.00	0.00	0.00	0.00	1,250.00
Total 3500 - Professional Fees	1,250.00	0.00	0.00	0.00	0.00	0.00	0.00	1,250.00
3640 - Rent warehouse/office	300.00	0.00	0.00	0.00	0.00	0.00	0.00	300.00
3642 - Office Rent	660.00	0.00	0.00	0.00	0.00	0.00	0.00	660.00
3643 - Storage Unit	960.00	0.00	0.00	0.00	0.00	0.00	0.00	960.00
Total 3640 - Rent warehouse/office	960.00	0.00	0.00	0.00	0.00	0.00	0.00	960.00
3816 - Software	921.32	0.00	0.00	0.00	0.00	0.00	0.00	921.32
3840 - Telephone & Inet access	743.92	0.00	0.00	0.00	0.00	0.00	0.00	743.92
3860 - Travel/Administrative	0.00	0.00	0.00	0.00	0.00	115.10	0.00	115.10
3900 - Website								
3641 - Rent E-Data off-site storage	420.00	0.00	0.00	0.00	0.00	0.00	0.00	420.00
Total 3900 - Website	420.00	0.00	0.00	0.00	0.00	0.00	0.00	420.00
Total 3000 - Operating Costs	27,850.75	0.00	190.01	0.00	8.38	8,513.55	0.00	36,562.69
6000 - Production								
6080 - ISSN Printing, Publications	0.00	0.00	0.00	0.00	-7.20	0.00	0.00	-7.20
6380 - ISBN production	0.00	0.00	0.00	0.00	12.00	0.00	0.00	12.00
Total 6000 - Production	0.00	0.00	0.00	0.00	4.80	0.00	0.00	4.80
7000 - Operating Costs Programs								
7138 - Food purchases	0.00	0.00	568.80	0.00	0.00	0.00	0.00	568.80
7500 - Site Fees								
7533 - Site Deposits	0.00	5,545.00	0.00	0.00	0.00	0.00	0.00	5,545.00
7575 - Site Fees - Lodging	0.00	0.00	400.00	0.00	0.00	0.00	0.00	400.00
Total 7500 - Site Fees	0.00	5,545.00	400.00	0.00	0.00	0.00	0.00	5,945.00
Total 7000 - Operating Costs Programs	0.00	5,545.00	968.80	0.00	0.00	0.00	0.00	6,513.80
8000 - Travel & Financial Aid	609.00	0.00	0.00	0.00	0.00	0.00	0.00	609.00
8160 - Annual Representative								
Total 8000 - Travel & Financial Aid	609.00	0.00	0.00	0.00	0.00	0.00	0.00	609.00
8550 - Miscellaneous expenses								
8605 - Fundraiser Expense	0.00	0.00	80.10	0.00	0.00	0.00	0.00	80.10
Total 8550 - Miscellaneous expenses	0.00	0.00	80.10	0.00	0.00	0.00	0.00	80.10
Total 2999 - Expenses	28,459.75	5,545.00	1,238.91	0.00	13.18	8,513.55	0.00	43,770.39
9000 - Transfer OUT TO other classes								
9005 - for Gathering Youth	0.00	0.00	0.00	0.00	0.00	0.00	2,038.00	2,038.00
9210 - for Michener Lecture	0.00	0.00	0.00	0.00	0.00	0.00	426.99	426.99
9215 - for Bertsche/Outrecht/Travel	0.00	0.00	0.00	0.00	0.00	0.00	890.77	890.77
9220 - for Staff Salary	0.00	0.00	0.00	0.00	0.00	0.00	2,080.66	2,080.66
9230 - for Walton Leduc/Gathering	0.00	0.00	0.00	0.00	0.00	0.00	789.25	789.25
Total 9000 - Transfer OUT TO other classes	0.00	0.00	0.00	0.00	0.00	0.00	6,225.67	6,225.67
Total Expense	28,459.75	5,545.00	1,238.91	0.00	13.18	8,513.55	6,225.67	49,996.06
Net Income	4,574.25	-2,317.75	1,613.89	476.99	1,067.85	-1,038.55	-696.56	3,679.92
Capital Gains (Losses)	0.00	0.00	0.00	0.00	66.22	0.00	-650.34	-630.34
Income Before Unrealized Capital Gains(Losses)	4,574.25	-2,317.75	1,613.89	476.99	1,001.43	-1,038.55	0.00	4,310.26